

State of Wyoming Corner Record

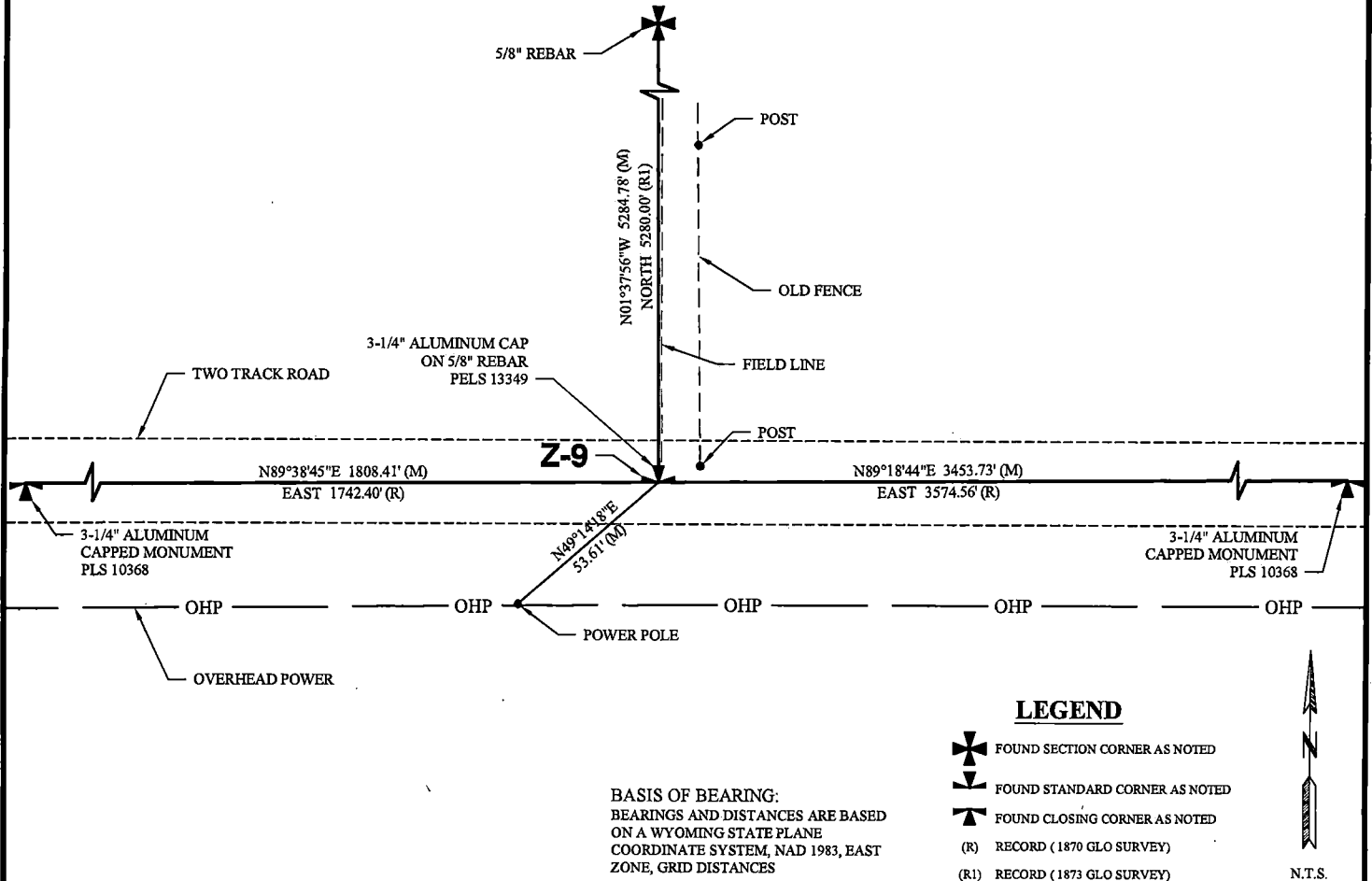
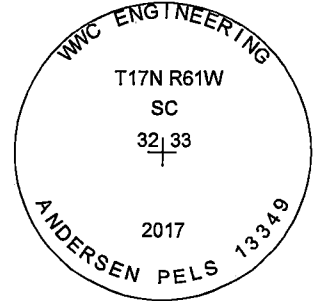
(In compliance with the CORNER PERPETUATION AND FILING ACT, Wyoming Statutes, 1997, Section 33-29-140, et seq., and the Rules and Regulations of the Board of Registration for Professional Engineers and Professional Land Surveyors)

Reverse side of this form may be used if more space is needed.

Record of original survey and citation of source of historical information (if corner is lost or obliterated.) Description of corner monumentation evidence found and/or monument and accessories established to perpetuate the location of this corner. Sketch of relative location of monument, accessories, and reference points with course and distance to adjacent corner(s) (if determined in this survey). Method and rationale for reestablishment of lost or obliterated corner.

EVIDENCE RECORD: 1870 GLO Survey: East along the south boundary of section 32, 80.00 chains. Set a lime stone 18"x10"x7" for corner to sections 33 & 32.

EVIDENCE FOUND: December 2017: Lime stone from 1870 GLO survey not found. Accepted intersection of east-west two track road with field line and old fence extending north as best available evidence for the corner to sections 32 & 33. Set a 3 1/4" aluminum cap marked as shown on a 5/8" rebar, 24" long.



LEGEND

- FOUND SECTION CORNER AS NOTED
- FOUND STANDARD CORNER AS NOTED
- FOUND CLOSING CORNER AS NOTED
- (R) RECORD (1870 GLO SURVEY)
- (R1) RECORD (1873 GLO SURVEY)

BASIS OF BEARING:
BEARINGS AND DISTANCES ARE BASED ON A WYOMING STATE PLANE COORDINATE SYSTEM, NAD 1983, EAST ZONE, GRID DISTANCES



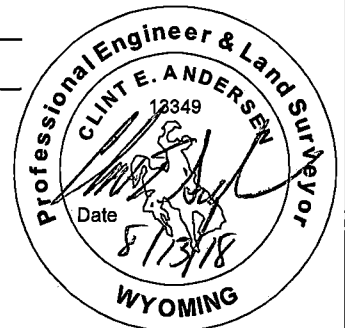
Date of Field Work: December 5, 2017 Office Reference: 2017-135

CROSS INDEX DIAGRAM

	1	2	3	4	5	6	7	8	9	10	11	12	13	14	15	16	17	18	19	20	21	22	23	24	25
A																									
B																									
C		6			5				4					3					2						1
D																									
E																									
F																									
G			7			8			9					10					11						12
H																									
J																									
K																									
L			18			17			16					15					14						13
M																									
N																									
O																									
P			19			20			21					22					23						24
Q																									
R																									
S																									
T			30			29			28					27					26						25
U																									
V																									
W																									
X			31			32			33					34					35						36
Y																									
Z																									
	1	2	3	4	5	6	7	8	9	10	11	12	13	14	15	16	17	18	19	20	21	22	23	24	25

Land Surveyor / Firm / Address
Clint E. Andersen
WWC Engineering
51 N. 15th Street, Suite 1
Billings, MT 59101
 Telephone: (406) 894-2210

This corner record was prepared by me or under my direction and supervision.
 SEAL & SIGNATURE



Corner Name: Southeast Corner Section: 32 T 17N R 61W : 6TH P.M. Cross-Index No.: Z-9
 SBRPEPLS/PLSW: March 1994; PLSW January 1998